



RECP #: 754584

RECORDED 6/5/2019 AT 3:33 PM BK# 2624 PG# 253
Debra K. Lee, CLERK OF LARAMIE COUNTY, WY PAGE 1 OF 1

STATE OF WYOMING CORNER RECORD

(In compliance with the CORNER PERPETUATION AND FILING ACT, Wyoming Statutes, 1997 Section 33-29-140, et. seq., and the Rules and Regulations of the Board of Registrations for Professional Engineers and Professional Land Surveyors)

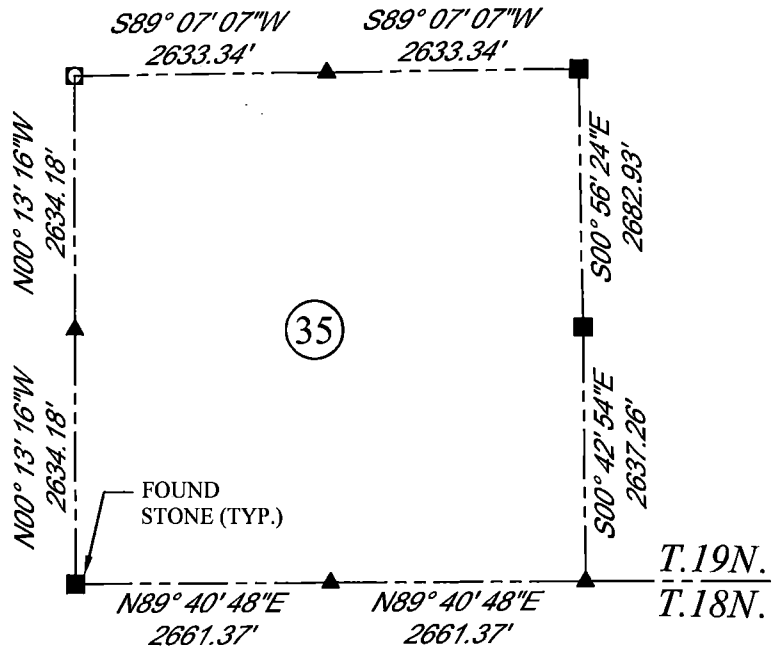
NORTHWEST CORNER SECTION 2, T. 18 N., R. 64 W., 6TH P.M., LARAMIE COUNTY, WYOMING

GLO: SET A GRANITE STONE 18X10X7 12 IN. DEEP WITH 4 MARKS ON THE WEST AND 2 ON THE EAST EDGE FOR CORNER TO SECTIONS 2,3,34 AND 35.

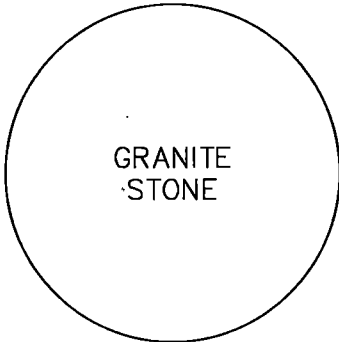
FOUND: SET GRANITE STONE APPROXIMATELY 14X9X5. NO MARKINGS FOUND.



SCALE: NONE
NORTH DETERMINED BY
G.P.S OBSERVATIONS



FOUND GRANITE STONE.



LEGEND:

- FOUND BLM CAP
- FOUND USFS CAP
- FOUND STONE
- FOUND PRIVATE MONUMENT
- ◆ CALCULATED POSITION
- ▲ SET MONUMENT (LS10245)
- SECTION LINE

DATE OF FIELD WORK: 4/15/2019 OFFICE REFERENCE: MERIDEN

CROSS INDEX DIAGRAM

A	1	2	3	4	5	6	7	8	9	10	11	12	13	14	15	16	17	18	19	20	21	22	23	24	25
B																									
C	6			5					4											3					1
D																									
E																									
F																									
G	7			8					9											10					12
H																									
J																									
K																									
L	18			17					16											15					13
M																									
N																									
O																									
P	19			20					21											22					24
Q																									
R																									
S																									
T	30			29					28											27					25
U																									
V																									
W																									
X	31			32					33											34					36
Y																									
Z	1	2	3	4	5	6	7	8	9	10	11	12	13	14	15	16	17	18	19	20	21	22	23	24	25

WOOD
2615 AVIATION DRIVE
SHERIDAN, WY 82801
PH: 307-675-6400



THIS CORNER RECORD WAS
PREPARED BY ME OR UNDER
MY DIRECTION AND
SUPERVISION,
SEAL AND SIGNATURE

